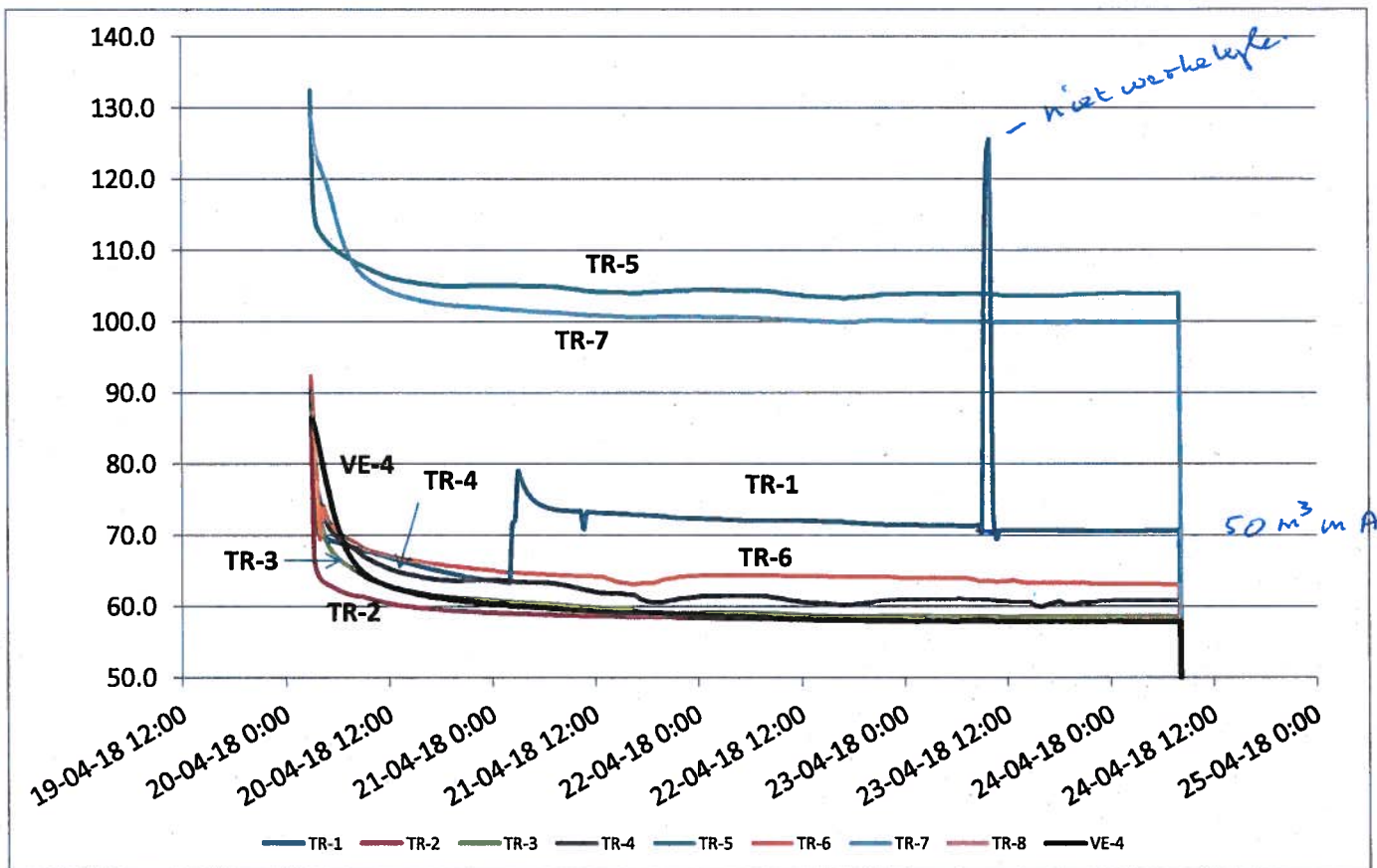
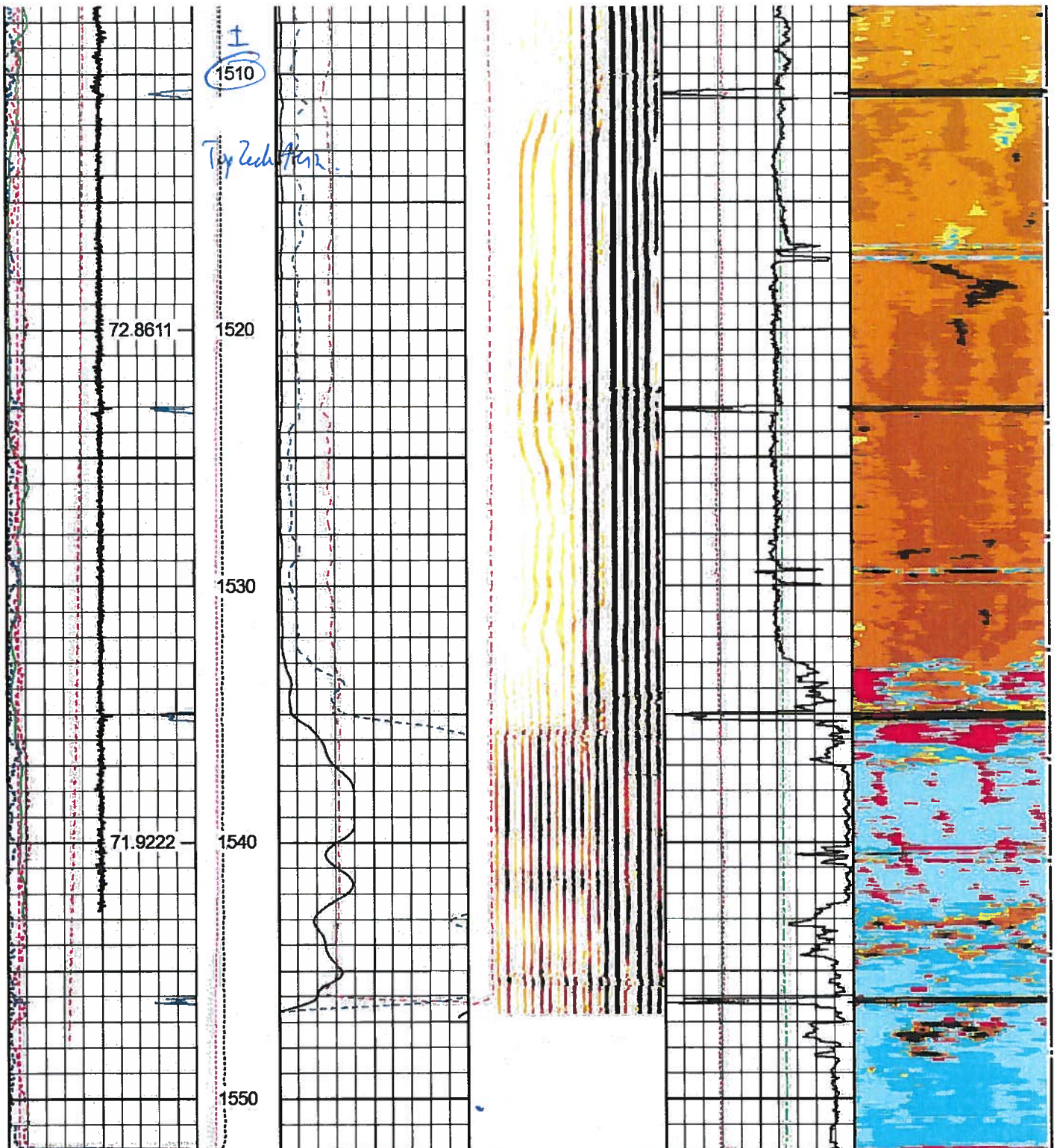


80 - 90 bar pekegwuld = 1.30 sg
 120 - 130 bar watergwuld = 1.00 sg





0	ECC (in)	1	RB	0	AMP (mV)	100	200	MSG	1160	10	AVG_Z (MRayl)	0	0	ZMAP (deg)	360
0	OVAL (in)	0.2	(deg)	0	AAMP (mV)	20					AVG_THK				
0	GR (GAPI)	150	0	360	TT3FT			TT3FT		0.2	(in)	1.2			
-1	DEV (deg)	39	LLEN		353	(usec)	253	200	(usec)	1200	220	FTT (usec/ft)	120		
	ACCL		(lb)												
85	TEMP (degC)	105	500	2500											
-100	CCL	100													
	TEMP														
	(degC)														

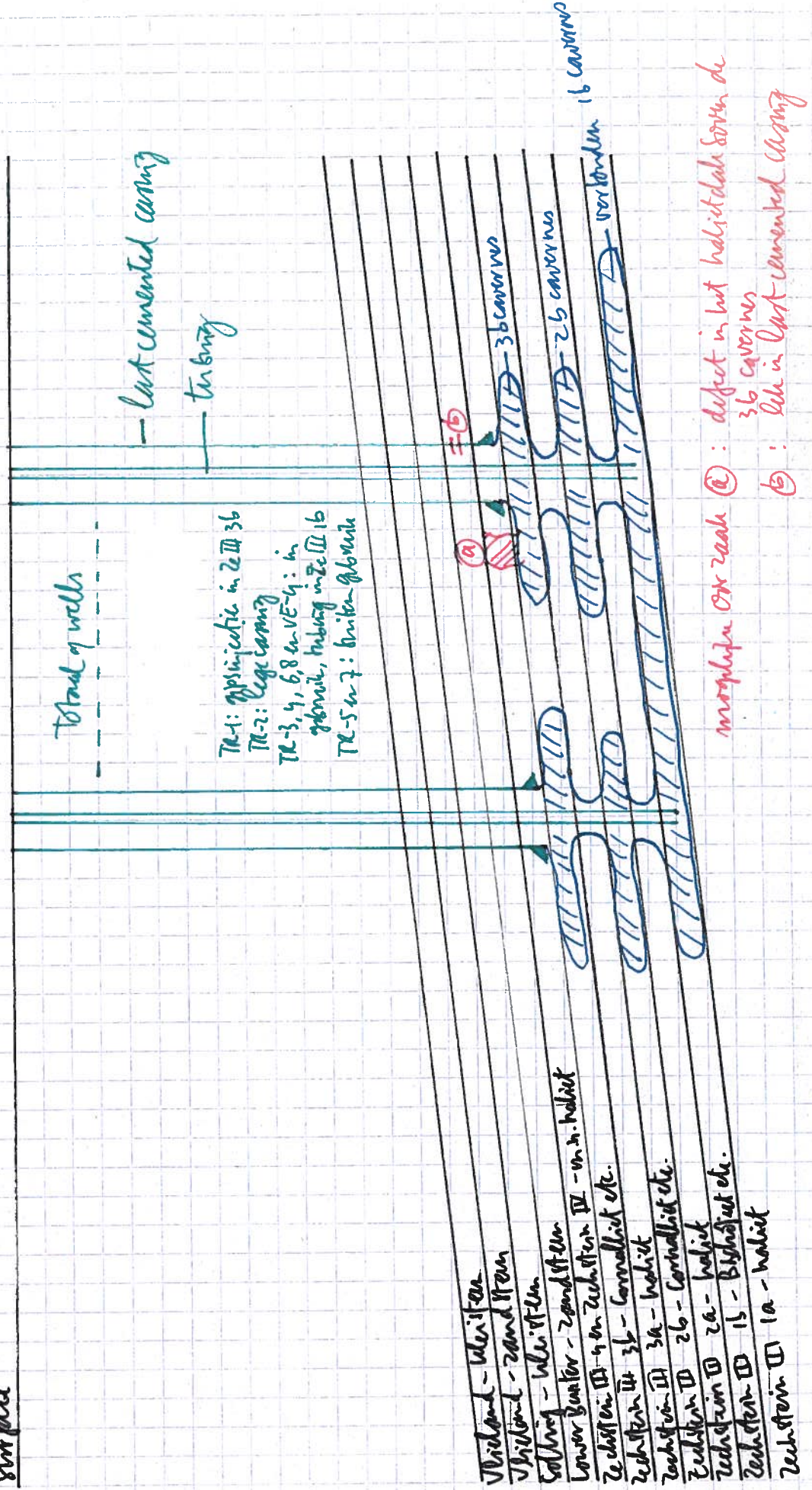
22 Jan 2018

HALLIBURTON

REPEAT PASS

CAST M PIPE INSPECTION MODE

Surface



morphologie Oor zeakle (a): defect in last individueel boven de 3b cavernes
 (b): lek in last-cemented casing